

CHAPTER II

REVIEW OF RELATED LITERATURE

This chapter, the researcher presents about some studies deal with this research. They will be presented in the following terms:

A. Theoretical Background

1. Movie as Literary Work

According to Klarer (2005: 56), the film has three main categories, namely the film features, the animated film, and documentation. The film is a work of fiction which feature structure is always a narrative. The animated film is usage techniques for creating the illusion of movement from a series of picture objects in two or three dimensions. The documentation of the movie is a work of nonfiction film depicting life situation a real happening in the society and every individual in it illustrates her feelings and experiences in a situation. That it is without preparation, and directly on the camera or the interviewer. The film not only as a medium to entertaining, but also as a medium. Container for filmmakers in the convey the message in their own way. In addition, the presence of a film on the life of human beings is currently considered to be the more important and on par with other media. Her practical, often equated with food clothing needs. So almost no life modern man is currently the untouched by this media. The film is interesting to discussed and was briefly engaged with psychoanalysis, because there are elements

of psychoanalysis of laptop the film. Psychoanalysis is itself a branch of science which was developed by Sigmund Freud (1856 – 1939).

There are two forms of literature that is informative literature and imaginative literature, informative literature tells us about facts, explanation, history, real great figures, life, etc. informative literature expresses the reality and information, etc (Hendarto, 1988: 6). The literary works of informative literature include essay, memoir, and biography.

Imaginative literature aims to arouse thought and feelings. Its author expresses his or her idea, feelings, and attitude. He or she may talk of things, peoples, etc. He or she wants to communicate feelings, not facts; emotion, not information only. Imaginative literature has the fuller sense and deeper sense than informative literature. The literary works of imaginative literature such as poetry, drama, novel, novella, short story, etc (Hendarto, 1988: 6).

Drama is the literary work which uses spoken words combines with acoustic and visual elements. At the beginning in the nineteenth century, the modern thinking came and drama developed into a cinematic form of film. Film is a semi-textual genre both influenced by and exerting influence on literature and literary criticism. But, it was already exist by World War I. The early film simply adopted the rigid perspective of the proscenium stage, the genre clearly departed from drama immediately prior to and during World War I Hollywood had become the center of

the film industry, with a widespread network of cinemas all over America (Klarer, 2004: 9).

Based on the explanation above, it can be assumed that movie is a branch of literature. Movie is visual literary. A film, also called a movie or motion picture, and is a series of still or moving images. It is produced by recording photographic images with cameras, or by creating images using animation techniques or visual effects. The process of film making has developed into an art form and industry. Movie has some elements. The elements of movie like element of drama or other fiction. The element of movie unity of a fiction value. A good movie consists of element that arranges the structure to be a good story and it called as the elements of fiction include in movie. There are nine elements of literature. They are plot, character, setting, theme, structure, point of view, diction, foreshadowing and conflict. The researcher will analyze the psychological conflict in Split movie because this film describes mostly about psychology. So, this research focuses on discussing conflict especially for psychological conflict of the main character.

2. Characters and Characteristics

Character of the story has a different characteristics. Characters in a story gives description, which can bring life to a story. To know the character, the author needs a way to present the character. That way is called characteristics (Martin, 1996:9). Characteristics is the technique that the writer uses to depict clear images of a character and also

the personalities he or she writes about. Many writers create their characters who are endowed with the specific moral and disposition qualities.

Character is the most important element in narrative work. Talking about character and characteristics and the whole images of it, in many things more attract the human attention than talking about plot of the story, but it does not mean that plot can be ignored, because clarity of the character and characteristics in many things depend on the plot. Character of story has a different relationship with characteristics; character in a story gives description, which can bring life to a story. To know the character, the researcher needs a way to present the character. That way is called characteristics (Martin, 1996:9).

3. Conflict

Conflict, according to some viewers, has many kinds of meaning. But, the word conflict itself is derived from the Latin word *Conflictus* means striking together with force. Some of the conflicts pointed out by Freud are those between pleasure seeking and reality, love and hate, passivity and activity in thesis the influence of Conflicts to Jeriflee's Character Development in Hatolrd Robbins' *The Lonely Lady* by Anik (2007: 7).

Based on Florian Znaniecki conflict divided by three, they are; (1) Physical Conflict is a conflict between man with nature. The conflict of man against nature shows a controversy for their proper and happiness in their life. (2) Social Conflict is a conflict between man (character)

with society. The conflict between one person against another happened because of the contradiction between them. (3) Psychological Conflict is a conflict that occurred in the heart, the soul of character (the characters) in the story. The psychological conflict is none the less real, since it appears real to the subject; and its effects are the same as if there were objectively no way of avoiding (1925: 200-201). So for the next explanation, the researcher will explain about kinds of conflict.

According (Znaniecki, 1925: 200-201) the consist of the kind of conflict is physical conflict, social conflict and psychological conflict. Physical conflict is related to the body or physique the character itself. Usually it is about the character condition. For example, the character has a disease or illness. Social conflict is the conflict that happened between character and the other character. Besides that, the character also has a conflict in the environment. It makes the character has a problem in their society.

4. Psychological Conflict

A strong psychological conflict can make a good story great. Psychology is the systematic, scientific study of behaviors and mental process (Plotnik and Kouyoumdjian, 2004: 4).

Western et al (2008) in the book Introduction to Psychology by Plotnik and Kouyoumdjian (2008: 436) said that Freud divided the mind into separate processes, each with a different function. Because of their different functions, Freud believed that interactions among the id, ego, and

superego would result in conflict. It means that the human have three mind to control the emotions or to control what should they do. So, below is about the id, ego, and superego based on the Freud theory.

a. **Id** (Pleasur Seeker)

Id which is Freud's first of the mind to develop, contains two biological drivers-sex and aggression that are the source of all psychic or mental energy, the id's goal is the pursue pleasure and satisfy the biological drivers (Plotnik and Koumyoumdjian, 2008:436).

Id is influence of pleasure principle. Based on the Plotnik and Koumyoumdjian (2008:436) said that pleasure principle operates to satisfy drivers and avoid pain.

b. **Ego** (Executive Negotiator between Id and Superego)

Ego is feeling about satisfied about some desire. The ego is the rational governing agent of the psyche. Freud statement in the book *A Handbook of Critical Approaches to Literature* by (Lee Morgan and friend,2005:157).

c. **Superego** (Regulator)

Superego which is Freud's third division of the mind develops from ego during early childhood: the superego's goal is to apply the moral values and standards of one's parents or caregivers and society in satisfying ones wishes (Plotnik and Koumyoumdjian, 2008:436).

B. Previous Study

Research by using psychological approach and conflict was discussed before by some researchers. Some studies about the psychological conflict are:

Hudaifah (2007) she discussed about conflict and character development. Her thesis also studies types of conflict, identified original character and how to conflict influence. The types of conflict are psychological conflict, physical conflict, social conflict, environmental conflict, and moral conflict.

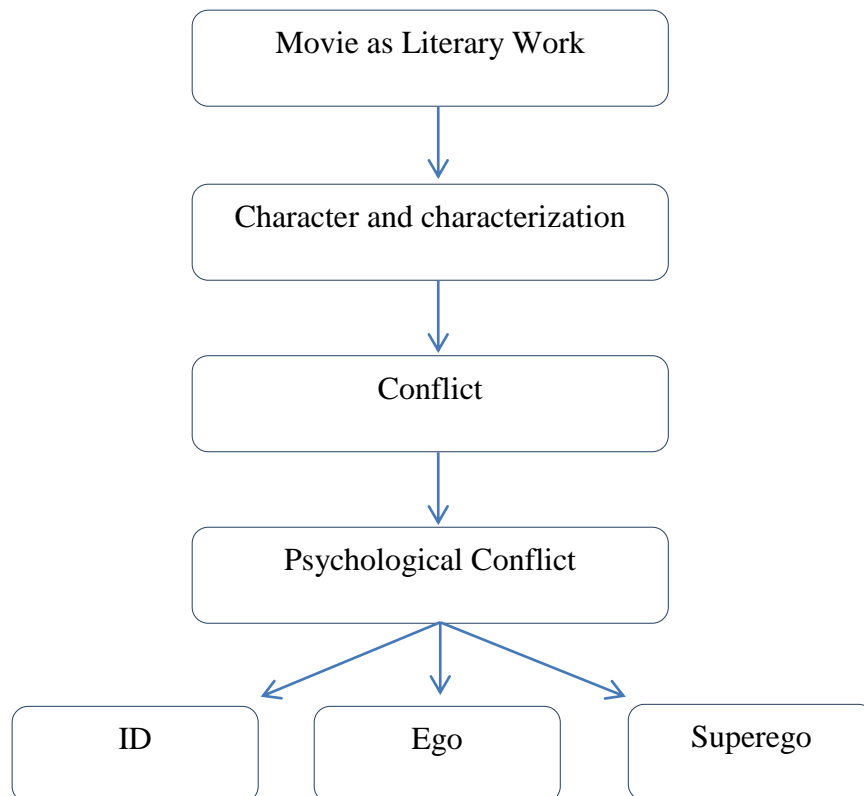
Habsari (2008), she conducted an analysis psychological conflict is a conflict that occurred in the heart, the soul of a character. Her thesis also discussed about the impact of conflict in human life. For this statement above the writer Habsari wants to give an easy way how to analyze psychological conflict in a movie and learn more about human conflict life, like the dilemma.

Psychological is applied to various spheres of human activity including the family, education, employment, and the treatment of mental health problems (Sartika,2013:17). Psychological includes many sub fields that span areas as diverse as human development sport, health, industry, and media.

The researcher had some of the reference to analyze psychological conflict. Some of the previous study give some benefit for researcher decide the title of thesis and to analyze some of the psychological conflict from Split movie. So, researcher analyzes about *"An Analysis Psychological Conflict of The Main Character "Kevin" in Split movie By M. NaightSvamalan "*.

C. Theoretical Framework

In this research the researcher are going to analyze the psychological conflict by Sigmund Freud theory using three structure component in "*Split movie*" that is: id, ego, and superego.



(Znaniiecki,1925. Plotnik and Koumyoumdjian,2008)