

LAMPIRAN

Lampiran 1: Rekapitulasi Data Bulanan Indeks Pembangunan Manusia di Kota Kediri tahun 2018 – 2023

Tahun	Indeks Pembangunan Manusia (IPM)
2018M01	7716.75
2018M02	7720.5
2018M03	7724.25
2018M04	7728
2018M05	7731.75
2018M06	7735.5
2018M07	7739.25
2018M08	7743
2018M09	7746.75
2018M10	7750.5
2018M11	7754.25
2018M12	7758
2019M01	7.762.166.666.666.660
2019M02	7.766.333.333.333.330
2019M03	7770.5
2019M04	7.774.666.666.666.660
2019M05	7.778.833.333.333.330
2019M06	7783
2019M07	7.787.166.666.666.660
2019M08	7.791.333.333.333.330
2019M09	7795.5
2019M10	7.799.666.666.666.660
2019M11	7.803.833.333.333.330
2019M12	7808
2020M01	7.813.833.333.333.330

Tahun	Indeks Pembangunan Manusia (IPM)
2020M02	7.819.666.666.666.660
2020M03	7825.5
2020M04	7.831.333.333.333.330
2020M05	7.837.166.666.666.660
2020M06	7843
2020M07	7.848.833.333.333.330
2020M08	7.854.666.666.666.660
2020M09	7860.5
2020M10	7.866.333.333.333.330
2020M11	7.872.166.666.666.660
2020M12	7878
2021M01	7.881.083.333.333.330
2021M02	7.884.166.666.666.660
2021M03	7887.25
2021M04	7.890.333.333.333.330
2021M05	7.893.416.666.666.660
2021M06	7896.5
2021M07	7.899.583.333.333.330
2021M08	7.902.666.666.666.660
2021M09	7905.75
2021M10	7.908.833.333.333.330
2021M11	7.911.916.666.666.660
2021M12	7915
2022M01	7.923.083.333.333.330
2022M02	7.931.166.666.666.660
2022M03	7939.25
2022M04	7.947.333.333.333.330
2022M05	7.955.416.666.666.660
2022M06	7963.5

Tahun	Indeks Pembangunan Manusia (IPM)
2022M07	7.971.583.333.333.330
2022M08	7.979.666.666.666.660
2022M09	7987.75
2022M10	7.995.833.333.333.330
2022M11	8.003.916.666.666.660
2022M12	8012
2023M01	8.019.083.333.333.330
2023M02	8.026.166.666.666.660
2023M03	8033.25
2023M04	8.040.333.333.333.330
2023M05	8.047.416.666.666.660
2023M06	8054.5
2023M07	8.061.583.333.333.330
2023M08	8.068.666.666.666.660
2023M09	8075.75
2023M10	8.082.833.333.333.330
2023M11	8.089.916.666.666.660
2023M12	8097

Lampiran 2: Rekapitulasi Data Bulanan Sumber Daya Alam (SDA) di Kota Kediri tahun 2018 – 2023

Tahun	Sumber Daya Alam (SDA)
2018M01	5.846.460.833.333.330
2018M02	5.847.921.666.666.660
2018M03	58.493.825
2018M04	5.850.843.333.333.330
2018M05	5.852.304.166.666.660
2018M06	5.853.764.999.999.990
2018M07	5.855.225.833.333.330
2018M08	5.856.686.666.666.660
2018M09	58.581.475
2018M10	5.859.608.333.333.330
2018M11	5.861.069.166.666.660
2018M12	586.253
2019M01	5.710.659.166.666.660
2019M02	5.558.788.333.333.330
2019M03	54.069.175
2019M04	5.255.046.666.666.660
2019M05	5.103.175.833.333.330
2019M06	4.951.305
2019M07	4.799.434.166.666.660
2019M08	4.647.563.333.333.330
2019M09	44.956.925
2019M10	4.343.821.666.666.660
2019M11	4.191.950.833.333.330
2019M12	404.008

Tahun	Sumber Daya Alam (SDA)
2020M01	4.198.246.666.666.660
2020M02	4.356.413.333.333.330
2020M03	451.458
2020M04	4.672.746.666.666.660
2020M05	4.830.913.333.333.330
2020M06	498.908
2020M07	5.147.246.666.666.660
2020M08	5.305.413.333.333.330
2020M09	5.463.580.000.000.000
2020M10	5.621.746.666.666.660
2020M11	5.779.913.333.333.330
2020M12	593.808
2021M01	5.902.041.666.666.660
2021M02	5.866.003.333.333.330
2021M03	5.829.965
2021M04	5.793.926.666.666.660
2021M05	5.757.888.333.333.330
2021M06	572.185
2021M07	5.685.811.666.666.660
2021M08	5.649.773.333.333.330
2021M09	5.613.735
2021M10	5.577.696.666.666.660
2021M11	5.541.658.333.333.330
2021M12	5.505.620.000.000.000
2022M01	5.537.505.000.000.000
2022M02	556.939
2022M03	5.601.275
2022M04	563.316
2022M05	5.665.045.000.000.000

Tahun	Sumber Daya Alam (SDA)
2022M06	569.693
2022M07	5.728.815.000.000.000
2022M08	57.607
2022M09	5.792.585
2022M10	582.447
2022M11	5.856.355
2022M12	588.824
2023M01	5.795.568.333.333.330
2023M02	5.702.896.666.666.660
2023M03	5.610.225
2023M04	5.517.553.333.333.330
2023M05	5.424.881.666.666.660
2023M06	533.221
2023M07	5.239.538.333.333.330
2023M08	5.146.866.666.666.660
2023M09	5.054.195
2023M10	4.961.523.333.333.330
2023M11	4.868.851.666.666.660
2023M12	477.618

Lampiran 3: Rekapitulasi Data Bulanan Pertumbuhan Ekonomi di Kota Kediri tahun 2018 – 2023

Tahun	Pertumbuhan Ekonomi
2018M01	5.164.166.666.666.660
2018M02	5.188.333.333.333.330
2018M03	52.125
2018M04	5.236.666.666.666.660
2018M05	5.260.833.333.333.330
2018M06	5.285
2018M07	5.309.166.666.666.660
2018M08	5.333.333.333.333.330
2018M09	53.575
2018M10	5.381.666.666.666.660
2018M11	5.405.833.333.333.330
2018M12	5.43
2019M01	5.433.333.333.333.330
2019M02	5.436.666.666.666.660
2019M03	5.44
2019M04	5.443.333.333.333.330
2019M05	5.446.666.666.666.660
2019M06	5.45
2019M07	5.453.333.333.333.330
2019M08	5.456.666.666.666.660
2019M09	5.46
2019M10	5.463.333.333.333.330
2019M11	5.466.666.666.666.660
2019M12	5.47
2020M01	4.493.333.333.333.330
2020M02	3.516.666.666.666.660
2020M03	2.54

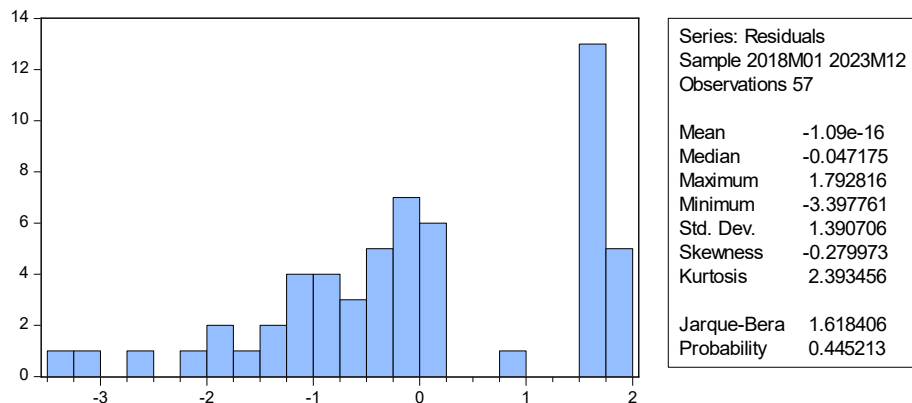
Tahun	Pertumbuhan Ekonomi
2020M04	1.563.333.333.333.330
2020M05	0.5866666666666665
2020M06	-0.39000000000000001
2020M07	-1.366.666.666.666.660
2020M08	-2.343.333.333.333.330
2020M09	-3.32
2020M10	-4.296.666.666.666.660
2020M11	-5.273.333.333.333.330
2020M12	-6.25
2021M01	-5.520.833.333.333.330
2021M02	-4.791.666.666.666.660
2021M03	-40.625
2021M04	-3.333.333.333.333.330
2021M05	-2.604.166.666.666.660
2021M06	-1.875
2021M07	-1.145.833.333.333.330
2021M08	-0.4166666666666665
2021M09	0.3125
2021M10	1.041.666.666.666.660
2021M11	1.770.833.333.333.330
2021M12	2.5
2022M01	2.620.833.333.333.330
2022M02	2.741.666.666.666.660
2022M03	28.625
2022M04	2.983.333.333.333.330
2022M05	3.104.166.666.666.660
2022M06	3.225
2022M07	3.345.833.333.333.330
2022M08	3.466.666.666.666.660

Tahun	Pertumbuhan Ekonomi
2022M09	3.587.500.000.000.000
2022M10	3.708.333.333.333.330
2022M11	3.829.166.666.666.660
2022M12	3.96
2023M01	3.780.833.333.333.330
2023M02	3.611.666.666.666.660
2023M03	3.442.500.000.000.000
2023M04	3.273.333.333.333.330
2023M05	3.104.166.666.666.660
2023M06	2.935
2023M07	2.765.833.333.333.330
2023M08	2.596.666.666.666.660
2023M09	24.275
2023M10	2.258.333.333.333.330
2023M11	2.089.166.666.666.660
2023M12	1.92

Lampiran 4: Hasil Uji Analisa Deskriptif

	X1	X2	Y
Mean	4.014.367	7.608.986	2.413.611
Median	7.899.500	5.611.500	3.245.000
Maximum	7.836.000	5.849.000	5.470.000
Minimum	7.740.000	4.040.000	6.250.000
Std. Dev.	1.556.481	1.069.183	3.259.533
Skewness	4.587.387	4.571.149	1.125.962
Kurtosis	2.204.438	2.194.987	3.240.689
Jarque-Bera	1.340.594	1.328.038	1.538.728
Probability	0.000000	0.000000	0.000456
Sum	2.890.344	5.478.470	1.737.800
Sum Sq. Dev.	1720070.	8.116.379	7.543.433
Observations	72	72	72

Lampiran 5: Hasil Uji Normalitas



Sumber: diolah dengan Eviews 10 (15 Desember 2024 jam 22:19)

Lampiran 6: Hasil Uji Autokorelasi

Breusch-Godfrey Serial Correlation LM Test:

F-statistic	84.36449	Prob. F(2,52)	0.0000
Obs*R-squared	43.57177	Prob. Chi-Square(2)	0.0000

Test Equation:

Dependent Variable: RESID

Method: Least Squares

Date: 01/01/25 Time: 22:26

Sample: 2018M01 2023M12

Included observations: 57

Presample and interior missing value lagged residuals set to zero.

Variable	Coefficient	Std. Error	t-Statistic	Prob.
C	0.000305	0.117656	0.002595	0.9979
X1	-0.002137	0.000569	-3.758482	0.0004
X2	0.000526	0.007837	0.067155	0.9467
RESID(-1)	0.818481	0.126986	6.445469	0.0000
RESID(-2)	0.194893	0.128714	1.514164	0.1360
R-squared	0.764417	Mean dependent var		-1.09E-16
Adjusted R-squared	0.746295	S.D. dependent var		1.390706
S.E. of regression	0.700486	Akaike info criterion		2.209548
Sum squared resid	25.51543	Schwarz criterion		2.388763
Log likelihood	-57.97211	Hannan-Quinn criter.		2.279197

F-statistic	42.18224	Durbin-Watson stat	1.069890
Prob(F-statistic)	0.000000		

Lampiran 7: Hasil Uji Heteroskedastisitas

Heteroskedasticity Test: Glejser

F-statistic	1.661734	Prob. F(2,54)	0.1994
Obs*R-squared	3.304714	Prob. Chi-Square(2)	0.1916
Scaled explained SS	4.432262	Prob. Chi-Square(2)	0.1090

Test Equation:

Dependent Variable: ARESID

Method: Least Squares

Date: 12/16/24 Time: 22:12

Sample: 2018M01 2023M12

Included observations: 57

Variable	Coefficient	Std. Error	t-Statistic	Prob.
C	5.559760	6.849202	0.811738	0.4205
X1	-0.059387	0.086589	-0.685855	0.4957
X2	-0.016314	0.008972	-1.818243	0.0746
R-squared	0.057977	Mean dependent var		0.745740
Adjusted R-squared	0.023088	S.D. dependent var		0.774419
S.E. of regression	0.765427	Akaike info criterion		2.354430
Sum squared resid	31.63744	Schwarz criterion		2.461959
Log likelihood	-64.10126	Hannan-Quinn criter.		2.396220
F-statistic	1.661734	Durbin-Watson stat		0.230184
Prob(F-statistic)	0.199368			

Lampiran 8: Hasil Uji Regresi Linier Berganda

Dependent Variable: Y

Method: Least Squares

Date: 12/17/24 Time: 20:52

Sample: 2018M01 2023M12

Included observations: 57

Variable	Coefficient	Std. Error	t-Statistic	Prob.
C	3.530330	0.235555	14.98731	0.0000
X1	0.002287	0.001089	2.100841	0.0403
X2	0.028381	0.015831	1.792793	0.0786
R-squared	0.116866	Mean dependent var		3.872281
Adjusted R-squared	0.084157	S.D. dependent var		1.479865
S.E. of regression	1.416226	Akaike info criterion		3.585064
Sum squared resid	108.3076	Schwarz criterion		3.692593
Log likelihood	-99.17433	Hannan-Quinn criter.		3.626854
F-statistic	3.572930	Durbin-Watson stat		0.229980
Prob(F-statistic)	0.034892			

Lampiran 9: Hasil Uji t-test (Uji Parsial)

Dependent Variable: Y

Method: Least Squares

Date: 12/17/24 Time: 20:52

Sample: 2018M01 2023M12

Included observations: 57

Variable	Coefficient	Std. Error	t-Statistic	Prob.
C	3.530330	0.235555	14.98731	0.0000
X1	0.002287	0.001089	2.100841	0.0403
X2	0.028381	0.015831	1.792793	0.0786
R-squared	0.116866	Mean dependent var		3.872281
Adjusted R-squared	0.084157	S.D. dependent var		1.479865
S.E. of regression	1.416226	Akaike info criterion		3.585064
Sum squared resid	108.3076	Schwarz criterion		3.692593
Log likelihood	-99.17433	Hannan-Quinn criter.		3.626854
F-statistic	3.572930	Durbin-Watson stat		0.229980
Prob(F-statistic)	0.034892			

Lampiran 10: Hasil Uji Signifikasi Simultan (Uji-F)

Dependent Variable: Y

Method: Least Squares

Date: 12/17/24 Time: 20:52

Sample: 2018M01 2023M12

Included observations: 57

Variable	Coefficient	Std. Error	t-Statistic	Prob.
C	3.530330	0.235555	14.98731	0.0000
X1	0.002287	0.001089	2.100841	0.0403
X2	0.028381	0.015831	1.792793	0.0786
R-squared	0.116866	Mean dependent var		3.872281
Adjusted R-squared	0.084157	S.D. dependent var		1.479865
S.E. of regression	1.416226	Akaike info criterion		3.585064
Sum squared resid	108.3076	Schwarz criterion		3.692593
Log likelihood	-99.17433	Hannan-Quinn criter.		3.626854
F-statistic	3.572930	Durbin-Watson stat		0.229980
Prob(F-statistic)	0.034892			

Lampiran 11: Hasil Uji Koefisien Determinasi (R-Square / R²)

Dependent Variable: Y

Method: Least Squares

Date: 12/17/24 Time: 20:52

Sample: 2018M01 2023M12

Included observations: 57

Variable	Coefficient	Std. Error	t-Statistic	Prob.
C	3.530330	0.235555	14.98731	0.0000
X1	0.002287	0.001089	2.100841	0.0403
X2	0.028381	0.015831	1.792793	0.0786
R-squared	0.116866	Mean dependent var		3.872281
Adjusted R-squared	0.084157	S.D. dependent var		1.479865
S.E. of regression	1.416226	Akaike info criterion		3.585064
Sum squared resid	108.3076	Schwarz criterion		3.692593
Log likelihood	-99.17433	Hannan-Quinn criter.		3.626854
F-statistic	3.572930	Durbin-Watson stat		0.229980
Prob(F-statistic)	0.034892			